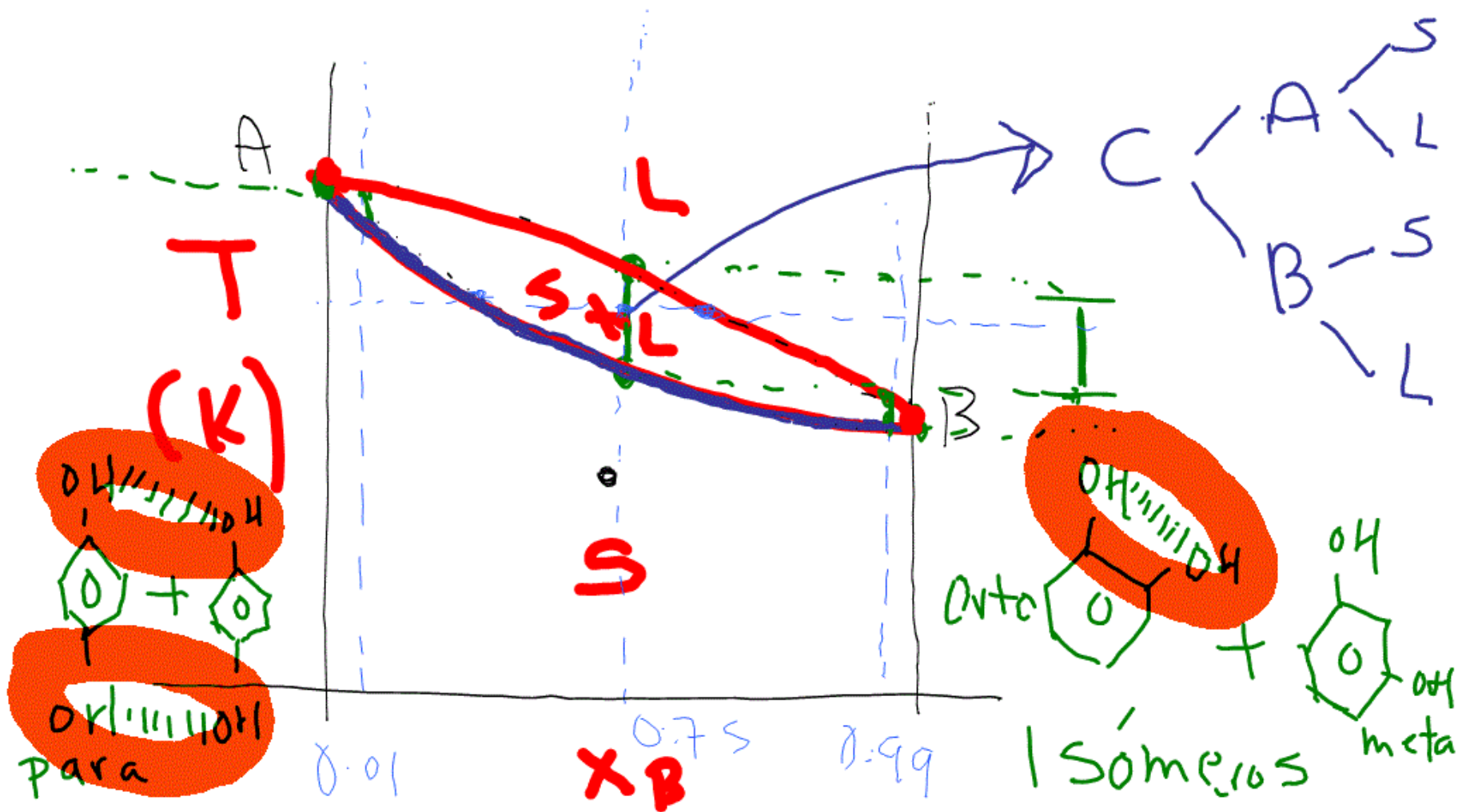
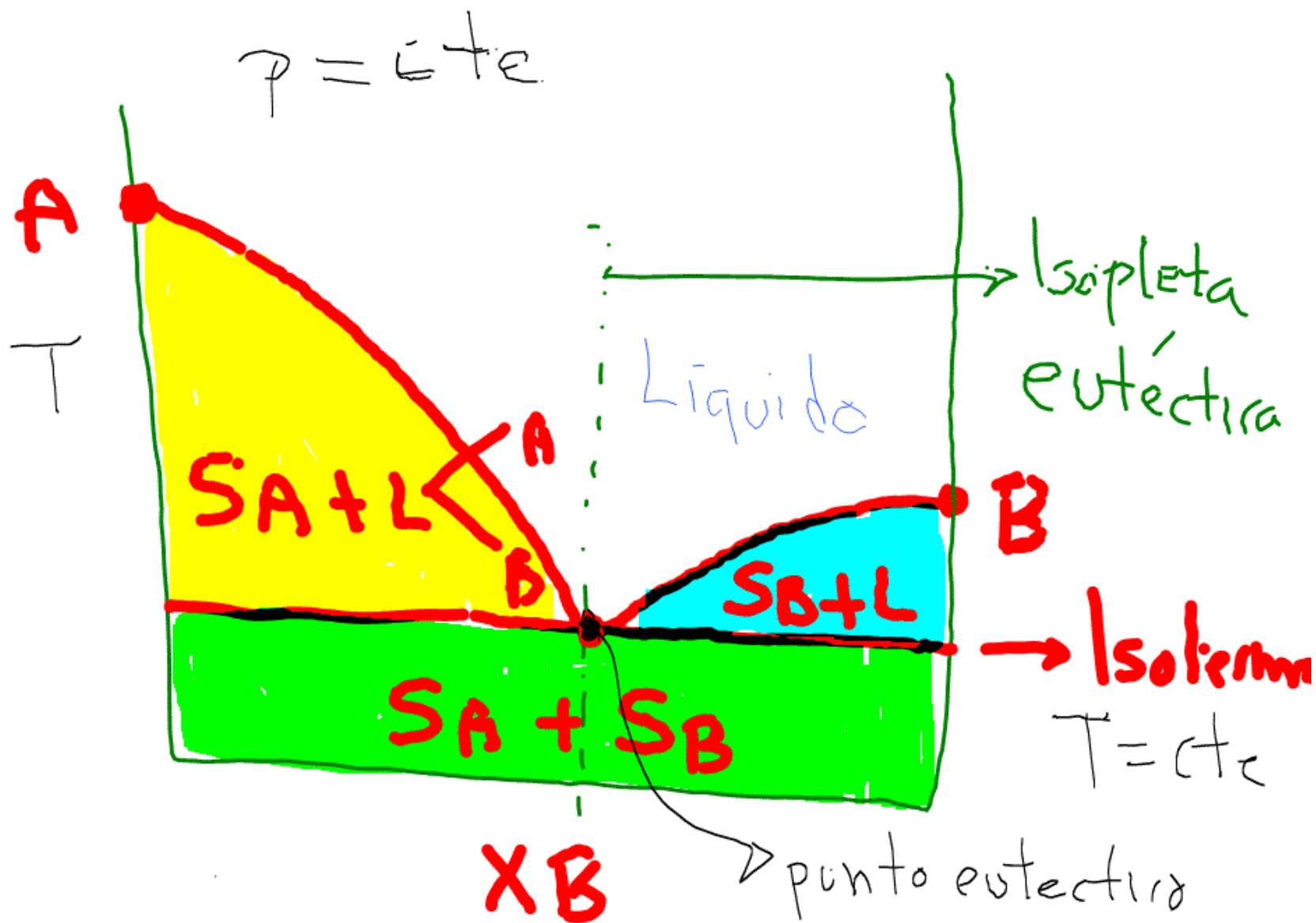


# Clase 28 JUNIO 2021

Título de la nota

28/06/2021





Regla de Gibbs  
punto eutéctico.

$$g.l. = C - f + 2$$

$$C = 2$$

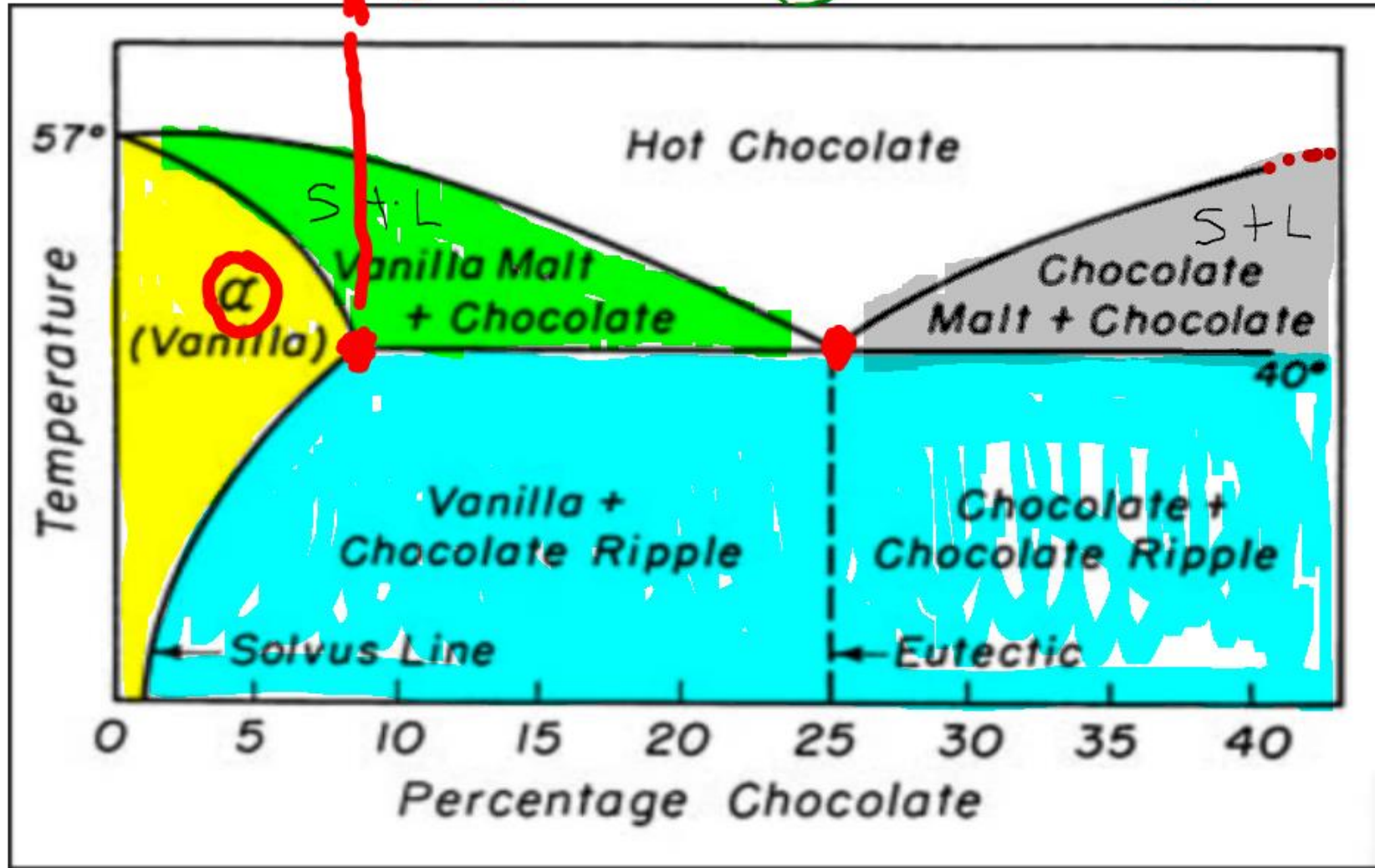
$$f = 2 \left\langle \begin{array}{l} S \\ i \end{array} \right\rangle \left\langle \begin{array}{l} A \\ B \\ A \\ B \end{array} \right\rangle = 4$$

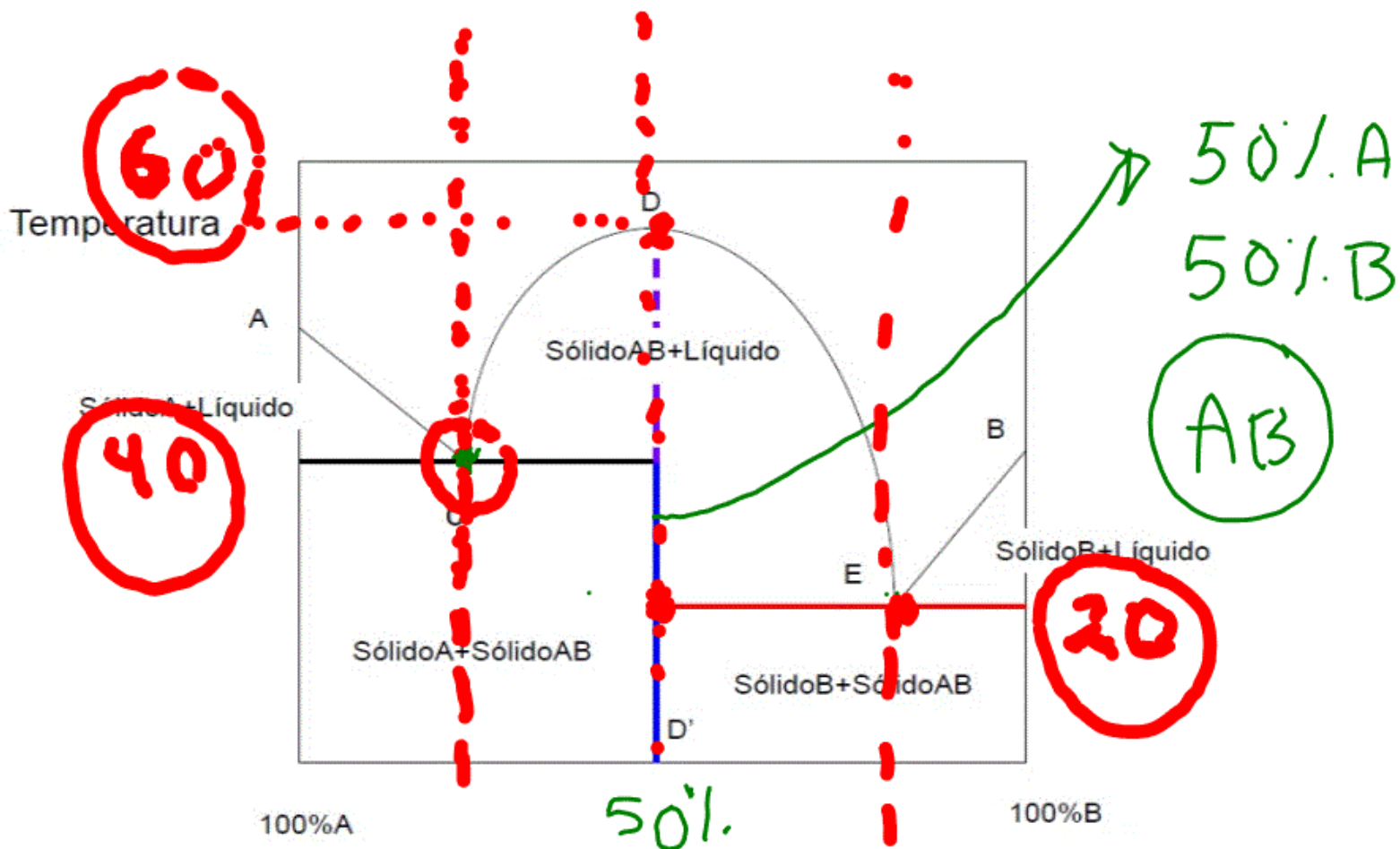
$$\text{g.l.} = 2 - 4 + 2 \\ = 0 \rightarrow$$

sistema invariante

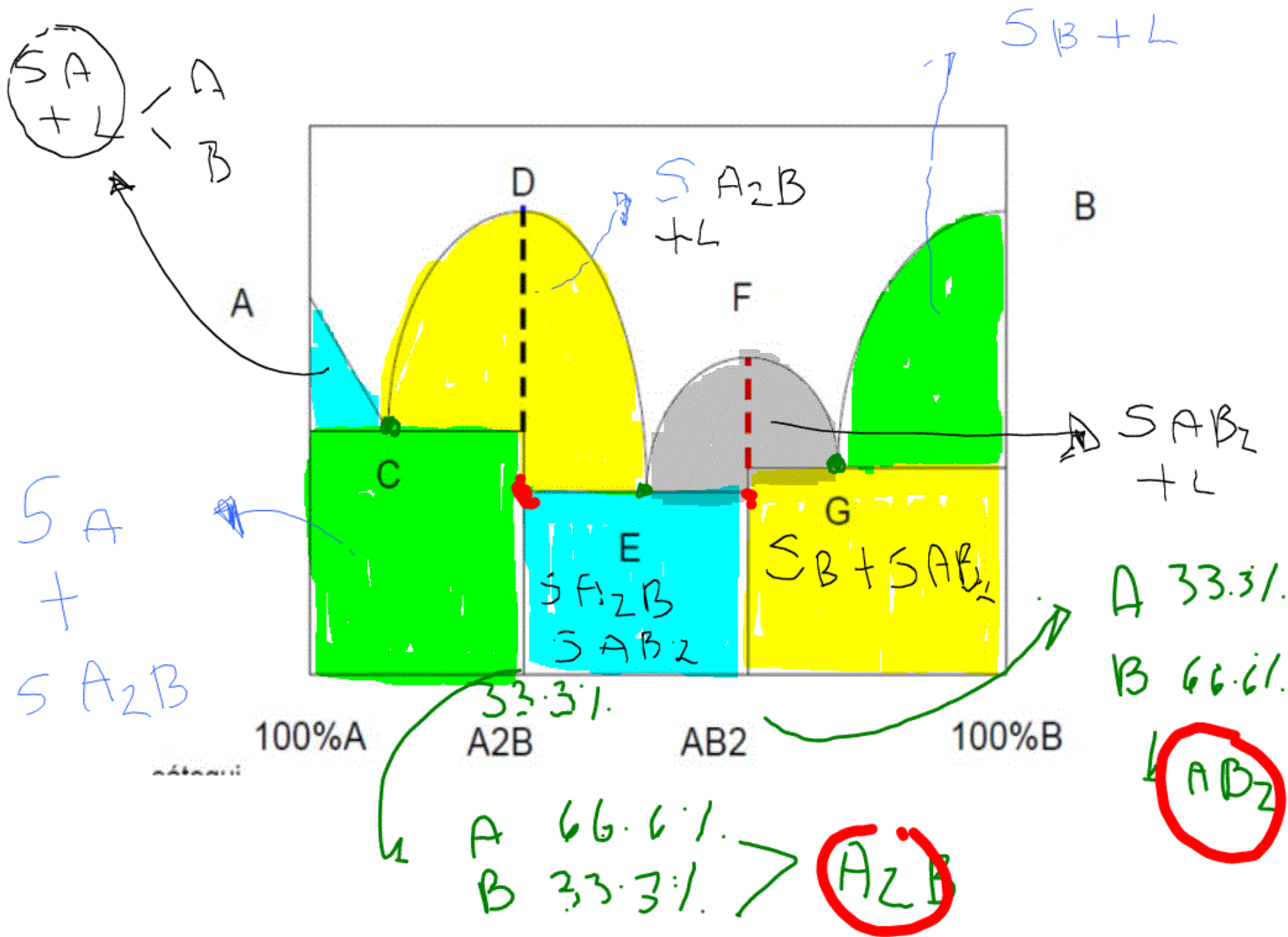
$T/P/_{\text{comp.}} = \text{g.l.} = \# \text{ variables intensivas}$

$$g.l = 2 - 4 + 2 = 0$$





# compuestos = # puntos eutectivos - 1



# puntos invariantes

||

$$\#(\text{puntos eutecticos}) + (\text{puntos eut.})$$
$$3 + (3-1) = 5$$



